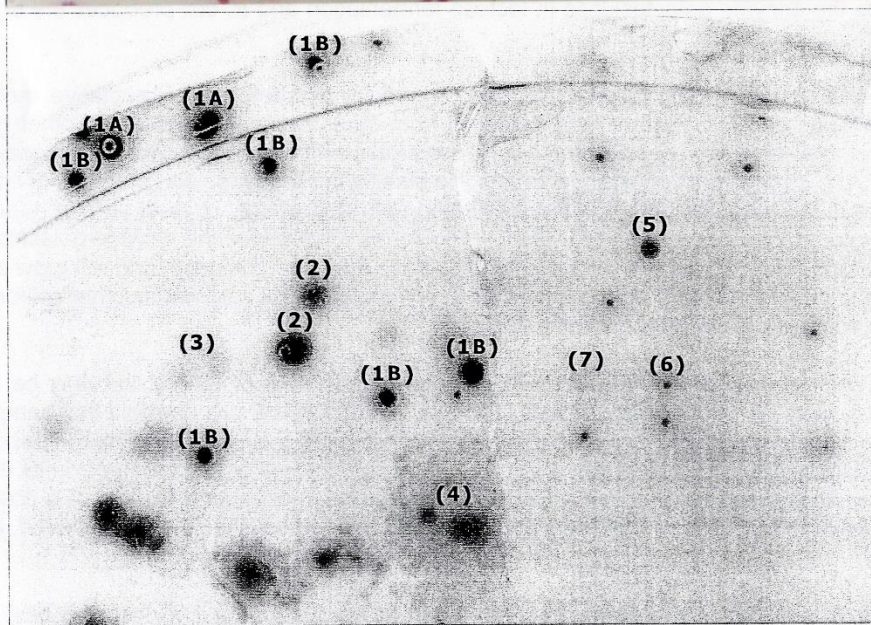
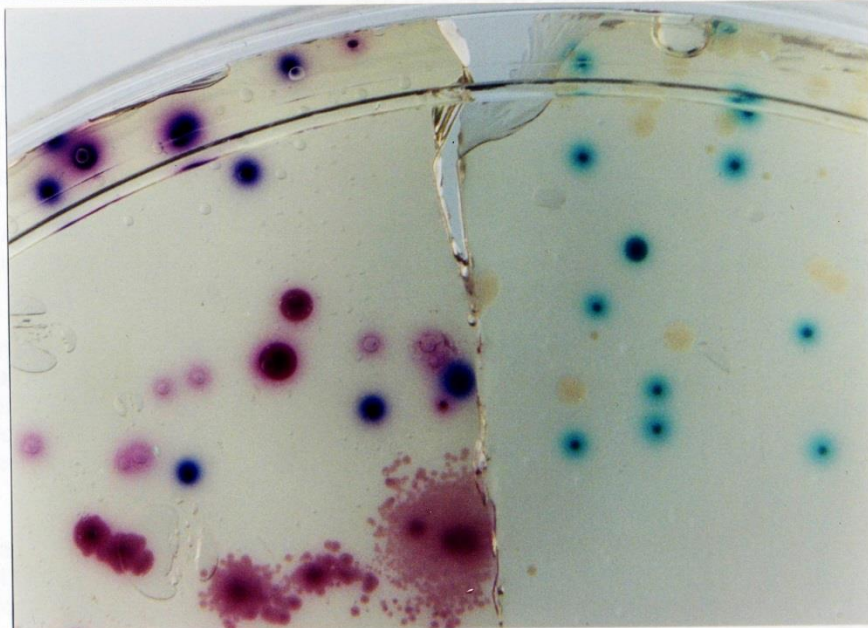


Coliscan® Easygel® Colony Color Guide



Specific colonies are numbered in picture above and their interpretation is described below. Refer to color photo for actual color reference.

The left half of the photo (#1-4) consists of colonies of *E. coli* (#1A, 1B) and *Enterobacter aerogenes* (#2, 3, 4) growing in/on Coliscan® Easygel® medium. The right half of the photo (#5, 6, 7) represents the appearance of organisms other than *E. coli* or coliforms.

- 1A- Two *E. coli* CFUs showing purple color with obvious pink diffused halos. Fecal coliform. (Glucuronidase +, Galactosidase +)
- 1B- *E. coli* CFUs blue/purple color with minimal pink halos. Fecal coliform. (Glucuronidase +, Galactosidase +)
- 2 - *Enterobacter aerogenes* CFUs as dark, solid pink color. Non-fecal coliform. (Contain no blue/purple) (Glucuronidase -, Galactosidase +)
- 3 - *Enterobacter aerogenes* CFUs as light pink color. Non-fecal coliform (Glucuronidase -, Galactosidase +)
- 4 - *Enterobacter aerogenes* CFUs spread on surface of medium.(2 original colonies) Non-fecal coliform. (Glucuronidase -, Galactosidase +)
- 5 - Teal green CFU growing on surface of medium. (Glucuronidase +) This colony type should not be counted as *E. coli* or coliform.*
- 6 - Teal green CFU growing in the medium. (Glucuronidase +) This colony type should not be counted as *E. coli* or coliform.*
- 7 - Colorless CFU (indicates no Glucuronidase or Galactosidase activity). This colony type should not be counted as *E. coli* or coliform.*

*These teal or colorless types of colonies may be significant other types of bacteria (such as *Salmonella spp.* or *Shigella spp.*) or even rarely found atypical *E. coli* or coliforms, but should never be counted as *E. coli* or coliform without further biochemical testing.

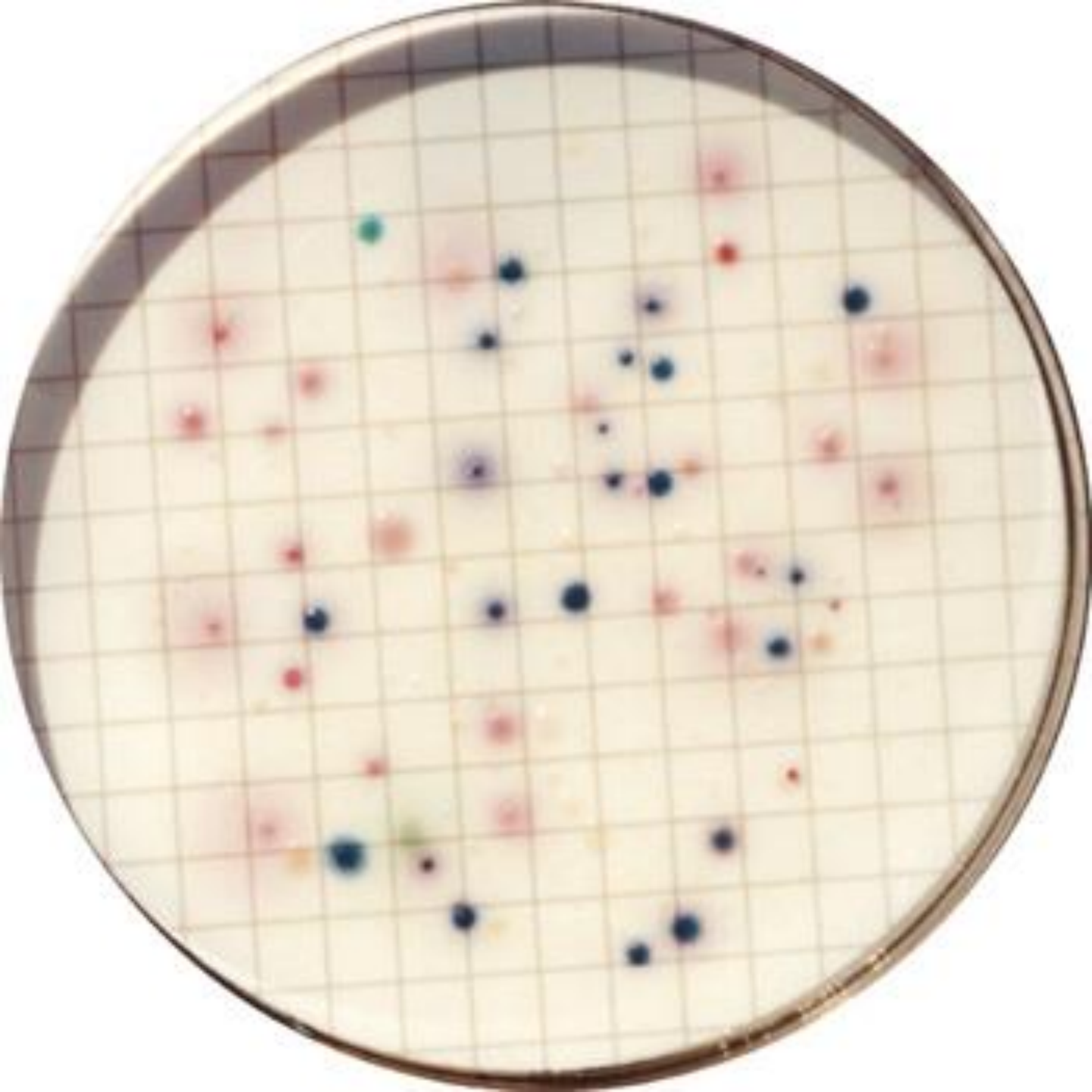


Plate # 1: 5 mL sample



Plate # 2: 10 mL Sample



Plate # 3: 1 mL sample